

GORDES

Country walk - Les Trois Grâces

2,1 KM

- Very easy walk
- Easy walk**
- Moderate walk
- Hard walk

Starting point : In front of the post office
in Gordes

Where to park : Next to the post
office, opposite the
hospital or the police

Waymarking : Yellow/red
regional GR and
yellow PR trail signs

Height difference : 80 m

Type : Loop

Time : 1h30

DESTINATION
LUBERON
CŒUR DE PROVENCE

Caution: Hunters will be around during the
hunting season from October to February, so be
careful.





Description

From the post office (GR waymark on a metal post), go up the car park due north, along the Chemin des Barres towards the cemetery. Continue straight ahead as the path narrows, with low dry-stone walls on both sides of the path.

After the house "le Boridon" turn right immediately onto the path through the scrubland (the waymarks now change and the PR trail starts here). As you descend you pass through the old quarry of Gordes, with some small ruins and little bories (dry-stone houses) hidden in the wood. You pass a huge boulder on the right, following the path that leads to a group of inhabited houses on the right built against the rocks.



Once on the little road to Les Rapières, turn left and walk up to the end, passing a black gate. Go behind the wooden post and chain (private site: please respect it) and continue across the fields (not very well waymarked), along the long embankment on your left and a young oak forest on the right. Halfway across the field go up the top terrace a little way, then due north on the path. (Visual reference: an old farmhouse on the top left).

Arriving just below the farm, turn right at the end of the path. At the next intersection, turn left and go up the entire scrubland area to a concrete path. Go up to the left due north and join the D15. From there, be careful! You join the regional GR path on the road to Murs, go down to the left and pass in front of the Petit Palais d'Aglaé hotel. At the next intersection, turn left to "La Chênaie" and continue straight on, on the Regional GR, back to Gordes, passing the village cemetery again.

Points of interest

- A breathtaking view of the Gordes plain. A view of Roussillon and the Luberon.
- The former Gordes quarry with its huge rocks.
- Typical scrubland plants: valerian, white-leaved rockrose, myrtle, mastic trees, thyme, rosemary, savory.
- Birds you may see include the ciril bunting, five species of Mediterranean warbler, and short-toed snake eagles and kestrels as they hunt.

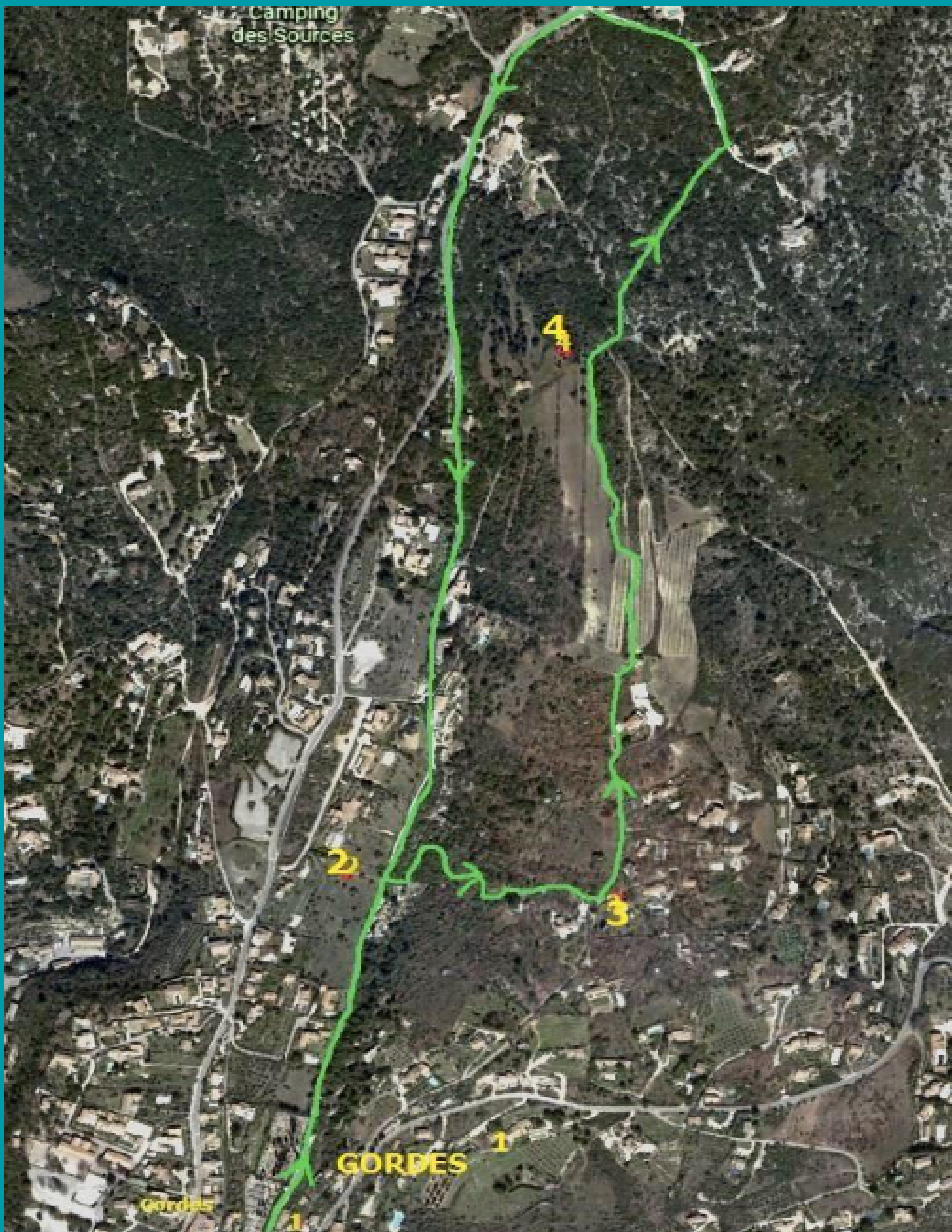
Worth knowing...

Les Trois Grâces - the Three Graces, or Three Charities - are Aglaea (the shining one), Thalia (the abundant, green one who makes plants bloom) and Euphrosyne (the joyful one who rejoices the heart; the joy of the soul inspired by the gifts of the sun).

Before leaving:

- In summer, check the risk of bush fire and the opening of the trails by calling 00 33 (0)4 28 31 77 11 or the Tourist Office.
- Take plenty of water and a hat.
- Wear comfortable walking shoes.







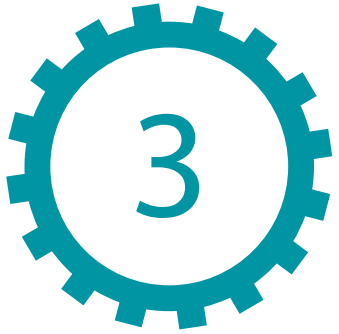
The hiker's charter



Treat protected areas with respect. In France, many outstanding natural sites (national parks, nature reserves, etc.) are protected by regulations.



Don't throw away rubbish; bring it back with you. Nature will be all the better for it!



Stay on the waymarked paths.



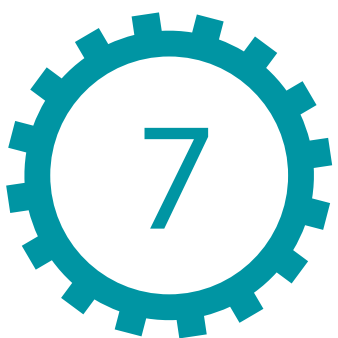
Respect the trees, admire the plants and observe the animals, but don't mutilate or cut plants or disturb wildlife, and be careful during nesting periods.



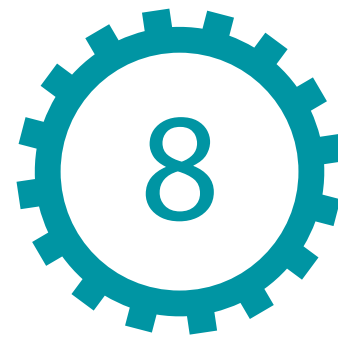
Comply with regulations: do not enter the massifs in vehicles off the roads open to public traffic.



Respect winegrowers and farmers, and do not pick their products.



Do not make fires. Fire is a danger for hikers and nature. Do not go into the forest in drought periods or in strong winds.



Follow instructions, and if you see a fire, call 18 or 112.



Information

DESTINATION
LUBERON
CŒUR DE PROVENCE



Destination Luberon Coeur de Provence Tourist Office

Head office in Cavailon

Place François Tourel / BP 70027

84301 Cavailon Cedex

00 33 (0)4 90 71 32 01

contact@luberoncoeurdeprovence.com

Find other walks in Destination Luberon

Coeur de Provence on

www.luberoncoeurdeprovence.com



Information points

Gordes : Le Château / 00 33 (0)4 90 72 02 75

Lourmarin : Place H. Barthélémy / 00 33 (0)4 90 68 10 77